



AM I A POTENTIAL PARTICIPANT?

If you meet the following criteria you may be eligible to take part in this study.....

Parent or parents(s)/legal guardians of a child diagnosed with an Autism Spectrum Disorder who have previously accessed or are currently accessing respite care through acute care services.

DO I HAVE TO TAKE PART?

The study is entirely voluntary and participants are free to withdraw at any time, without giving a reason. Information provided during the study will not be used should you choose to withdraw at any stage.

WHAT WILL HAPPEN IF I PARTICIPATE?

You will be asked to chat with the researcher about your experience of accessing respite care through hospitals at a time and location that is most convenient to you. **Interviews can take place remotely using an encrypted version of zoom if you would prefer this option rather than meeting face to face.** You will be given time to ask the researcher any questions you may have before part.



**TRINITY
COLLEGE
DUBLIN**



ARE YOU CARING FOR A CHILD WITH AN AUTISM SPECTRUM DISORDER?

Would you like to share your experiences on accessing respite care through hospitals/acute care services?

If so, here is a chance to talk about your experience.



IS THE STUDY **CONFIDENTIAL?**



All information will be recorded in confidence using a tape recorder and your personal information will be protected so that your identity is not revealed. Participant's names will not be used. A copy of your interview will be written out for you and you will be given the opportunity to review the information provided following the interview process.

WHAT ARE THE BENEFITS OF BEING INVOLVED IN THIS RESEARCH?

You will assist the researcher in identifying frontline challenges/issues related to accessing respite care services for children with Autism Spectrum Disorders.

WHAT ARE THE POSSIBLE DISADVANTAGES OF TAKING PART?

There are no known direct disadvantages for you. It is noted that you will be dedicating some of your personal time to this study. Therefore, the researcher is committed to arranging a time and location that best suits your needs when carrying out interviews.

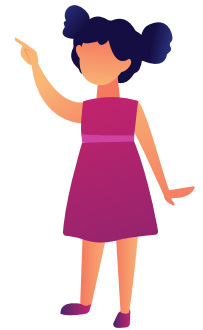
WHAT IS THE POSSIBLE OUTCOME OF THE RESEARCH?

Findings may help to identify a requirement for a range of respite service to be developed in a coordinated and structured way to meet the complex needs of children with Autism Spectrum Disorders.



IS THERE ANY OTHER INFORMATION I SHOULD KNOW?

The researcher would like to strongly emphasize that partaking in this study does not prioritize the right to receive respite services nor will it enable quicker access. The information you provide will contribute towards the understanding of the current situation for accessing respite care in Ireland and may inform future models and service planning in the area of accessing respite care in Ireland.



HOW CAN I APPLY?



+353 87 0551190



EMCOOKE@TCD.IE